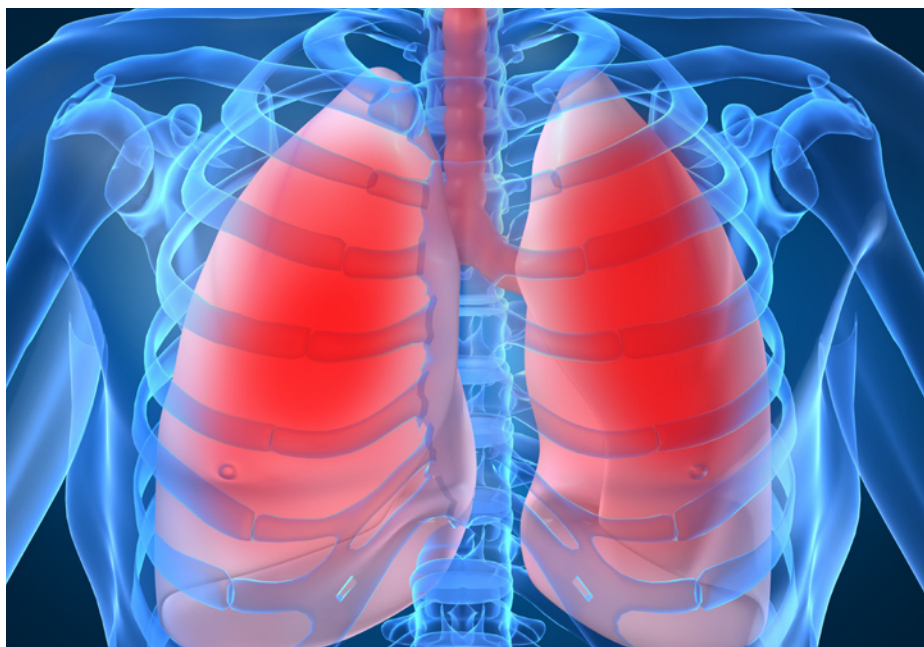


# Eighth Annual Nemacolin Asthma Conference

**An Interactive Forum on Patient Care, Therapy and Research**

*Friday through Sunday, November 1-3, 2013  
Nemacolin Woodlands Conference Center  
Farmington, Pennsylvania*



**SPONSORED BY**

Department of Medicine  
Division of Allergy, Asthma and Immunology  
Allegheny General Hospital  
Pittsburgh, Pennsylvania  
[www.nemacolinasthma.org](http://www.nemacolinasthma.org)



**Allegheny General  
Hospital**

## Conference Overview

Despite significant advances in understanding of the pathophysiology and treatment of asthma, recent surveys have revealed that asthma control and morbidity have not improved. Therefore, these advances have not translated into improvement in outcomes despite their potential to do so. Despite an updated national guideline for asthma, clinicians continue to under-estimate asthma severity, over-estimate control, and under-prescribe controller therapies, and patients continue to be non-adherent with medical and non-medical approaches to therapy. More education and behavioral modification of health care professionals is clearly needed. This conference will bring the latest developments in this rapidly changing field to health care professionals practicing, researching and teaching asthma care.

Recent research has focused on the heterogeneity among patients with asthma, with regard to variable expression and natural history, as well as response to medications. Many factors underlie the heterogeneity, including environmental factors such as allergens, pollution, tobacco smoke and viruses, demographic and social factors such as low socioeconomic status, obesity and gender, and genetics. Gene-by-environment interactions are also evident. Moreover, a number of studies, including those conducted by national asthma research networks, are evaluating roles for immune-modulating therapies in the management of asthma.

## Intended Audience and Objectives

This conference is intended for primary care physicians, pediatricians, pulmonologists, allergists, physician assistants, nurse practitioners, ENTs and asthma specialists. At the conclusion, participants should have the ability to:

- recognize the heterogeneity within and among asthma patients and understand the genetic, environmental, and social factors that underlie asthma heterogeneity
- elucidate our understanding of the relative roles of respiratory syncytial virus and rhinoviruses in the development and exacerbation of asthma
- highlight the importance of allergy in asthma and translate recent research findings into approaches to patients in clinical practice
- identify treatment approaches that individualize therapy based on heterogeneity and balance the safety and efficacy of controller therapies
- understand the impact on asthma of an immune system modulator such as allergen immunotherapy

## Intended Outcome

To positively impact the morbidity and cost of asthma by providing health care practitioners with recommendations on the care of patients with asthma that are based on the most up-to-date research conducted by the world's leading asthma experts.

## Course Directors

### David P. Skoner, MD

#### Course Co-Founder

Professor of Medicine  
Temple University School of Medicine  
Director, Division of Allergy, Asthma and Immunology  
Department of Medicine  
Allegheny General Hospital  
Pittsburgh, Pennsylvania

### Deborah Gentile, MD

Associate Professor of Medicine  
Temple University School of Medicine  
Director of Research, Division of Allergy, Asthma and Immunology  
Department of Medicine  
Allegheny General Hospital  
Pittsburgh, Pennsylvania

### Giovanni Piedimonte, MD

#### Course Co-Founder

Calabrese Chair of Pediatrics  
Professor and Chair, Cleveland Clinic Pediatric Institute  
Physician-in-Chief, Cleveland Clinic Children's Hospital  
Cleveland, Ohio

### Sally E. Wenzel, MD

Professor of Medicine  
Director, University of Pittsburgh Asthma Institute at UPMC and University of Pittsburgh School of Medicine  
Pulmonary, Allergy and Critical Care Medicine  
Pittsburgh, Pennsylvania

## Conference Fellows

### Program Director

#### Pulmonary

### Reynold A. Panettieri Jr., MD

Robert I. Mayock and David A. Cooper Professor of Medicine  
Adjunct Professor of Medicine Wistar Institute  
University of Pennsylvania School of Medicine  
Philadelphia, Pennsylvania

## Allergy and Immunology

### Deborah Gentile, MD

Associate Professor of Medicine  
Temple University School of Medicine  
Director of Research, Division of Allergy, Asthma and Immunology  
Department of Medicine  
Allegheny General Hospital  
Pittsburgh, Pennsylvania

## Pro/Con Debate Moderator

### Paul O'Byrne, MB, FRCP(C), FRSC

EJ Moran Campbell Professor and Chair  
Department of Medicine  
McMaster University  
Hamilton, Ontario, Canada

## Basic Scientific Session Moderator

### Jay K. Kolls, MD

Director, Richard King Mellon Foundation Institute for Pediatric Research  
Professor of Pediatrics and Immunology  
University of Pittsburgh School of Medicine  
Vice Chair for Translational Research  
Department of Pediatrics  
Children's Hospital of Pittsburgh of UPMC  
Pittsburgh, Pennsylvania

## Keynote Speaker

### Stephen R. Durham, MA MD FRCP

Professor of Allergy and Respiratory Medicine  
Imperial College School of Medicine  
NHLI and Royal Brompton Hospital London  
London, United Kingdom

## Gilbert Friday, MD

### Memorial Lecture Speaker

#### Professor Peter Barnes

Head of Respiratory Medicine  
Imperial College,  
London, United Kingdom

## Philip Fireman, MD

### Lecture Speaker

#### William W. Busse, M.D.

Professor of Medicine  
University of Wisconsin School of Medicine and Public Health  
Allergy, Pulmonary and Critical Care Medicine  
Madison, Wisconsin

## Faculty

### Professor Chris Brightling

Wellcome Senior Clinical Fellow  
Honorary Consultant  
Institute for Lung Health  
Leicester, United Kingdom

### Benjamin M. Gaston IV, MD

Professor of Pediatrics  
Chief, Division of Pediatric Pulmonology  
Rainbow Babies and Children's Hospital  
Cleveland, Ohio

### Michael A Kaliner, MD

Medical Director, Institute for Asthma and Allergy, PC.  
Professor of Medicine, George Washington University  
School of Medicine  
Chevy Chase, Maryland

### Parameswaran Nair, MD, PhD, FRCP, FRCPC

Canada Research Chair in Airway Inflammometry  
Associate Professor of Medicine, Division of  
Respirology  
McMaster University  
Hamilton, Ontario

### Giovanni Passalacqua, MD

Allergy and Respiratory Diseases  
Department of Internal Medicine  
University of Genoa  
Genoa, Italy

### Anuradha Ray, PhD

Endowed Chair of Lung Immunology in Medicine  
Professor of Medicine and Immunology  
University of Pittsburgh School of Medicine  
Pulmonary Allergy and Critical Care Medicine  
Pittsburgh, Pennsylvania

### Robert P. Schleimer, PhD

Chief, Division of Allergy-Immunology  
Professor of Medicine  
Northwestern University Feinberg School of Medicine  
Chicago, Illinois

### W. Gerald Teague, MD

Ivy Distinguished Professor of Pediatrics  
Director, Division of Pediatric Respiratory Medicine  
and Allergy  
University of Virginia School of Medicine  
Charlottesville, Virginia

## Chief Discussant

### Thomas A. E. Platts-Mills, MD, PhD, FRS

Oscar Swineford Jr Professor of Medicine  
Head, Asthma and Allergic Diseases Center  
University of Virginia  
Charlottesville, Virginia

## Discussants

### Sergei Belenky, MD, PhD

Clinical Assistant Professor of Medicine  
University of Pittsburgh School of Medicine  
Medical Director, Division of Allergy, Asthma  
and Immunology  
Pediatric Alliance, P.C.  
Pittsburgh, Pennsylvania

### Don Bukstein, MD

Allergy, Asthma and Sinus Center Milwaukee  
and TeleHealth Allergy, Sinus and Asthma Physicians  
(Tele-ASAP)  
Milwaukee, Wisconsin

### Merritt Fajt, MD

Assistant Professor of Medicine, Asthma Institute  
University of Pittsburgh School of Medicine of UPMC  
Division of Pulmonary, Allergy and Critical Care  
Medicine  
Pittsburgh, Pennsylvania

### Philip Fireman, MD

Professor Emeritus of Pediatrics and Medicine  
University of Pittsburgh School of Medicine  
Pittsburgh, Pennsylvania

### Jay K. Kolls, MD

Director, Richard King Mellon Foundation Institute for  
Pediatric Research  
Professor of Pediatrics and Immunology  
University of Pittsburgh School of Medicine  
Vice Chair for Translational Research  
Department of Pediatrics  
Children's Hospital of Pittsburgh of UPMC  
Pittsburgh, Pennsylvania

### Reynold A. Panettieri Jr., MD

Robert I. Mayock and David A. Cooper  
Professor of Medicine  
Adjunct Professor of Medicine Wistar Institute  
University of Pennsylvania School of Medicine  
Philadelphia, Pennsylvania

## Conference Schedule

Friday, November 1, 2013

5.75 AM PRA Category 1 Credits™

**Session Chair: Deborah Gentile, MD**

**8:00 a.m.** *Registration/Continental Breakfast (Visit Exhibits)*

**8:45 a.m.** Welcome Remarks  
**David Skoner, MD**  
**Deborah Gentile, MD**

**9:00 a.m.** Update on Corticosteroid Safety in Children  
**David P. Skoner, MD**

**9:35 a.m.** Discussion  
**Led by Chief Discussant Thomas A. E. Platts-Mills, MD, PhD, FRS**

**9:50 a.m.** Medical Survivor: Pediatric Cases  
**Moderator: David P. Skoner, MD**

**10:40 a.m.** *Break and Refreshments (Visit Exhibits)*

**Philip Fireman, MD Lecture**

**11:00 a.m.** Respiratory Infections and Asthma  
**William W. Busse, MD**

**11:45 a.m.** Pathobiology of Ventilation Heterogeneity in Children with Asthma  
**W. Gerald Teague, MD**

**12:15 p.m.** *Break*  
Pick up boxed lunch and return to meeting room.

**12:30p.m.** *Lunch/Lecture*  
Pro/Con Debate  
Endotyping asthma patients is ready for "prime time"  
**Pro: Benjamin Gaston, MD**  
**Con: William Busse, MD**  
**Moderator: Paul O'Byrne, MB, FRCPI, FRCPC, FRCPE, FRCP (Glasg)**

**1:30 p.m.** Discussion  
**Led by Chief Discussant Thomas A. E. Platts-Mills, MD, PhD, FRS**

**2:00 p.m.** *Break (Visit Exhibits)*

**2:20 p.m.** Fellows Abstract Presentations  
**Moderators, Reynold A. Panettieri Jr., MD, and Deborah Gentile, MD**  
**Directors of Conference Fellows Program**

**3:20 p.m.** *Adjournment*

## Conference Schedule

Saturday, November 2, 2013 6.75 AMA PRA Category 1 Credits™

**Session Chair: Sally E. Wenzel, MD**

*7:00 a.m. Optional Industry Lecture and Breakfast*

*7:15 a.m. Registration/Continental Breakfast (Visit Exhibits)*

*7:45 a.m.* Opening Remarks  
**David P. Skoner, MD**

*7:55 a.m.* Opening Remarks and Introductions  
**Sally E. Wenzel, MD**

*8:05 a.m.* A Patient's Perspective on Asthma  
**Karn Malik**

*8:15 a.m.* Specific Immunotherapy in Asthma  
**Giovanni Passalacqua, MD**

### Keynote Lecture

*8:45 a.m.* Update on Sublingual Immunotherapy  
**Stephen R. Durham, MA MD FRCP**

*9:30 a.m.* Discussion  
**Led by Chief Discussant Thomas A. E. Platts-Mills, MD, PhD, FRS**

*10:00 a.m. Break (Visit Exhibits)*

**Basic Scientific Session**  
**Moderator: Jay Kolls, MD**

*10:20 a.m.* Inflammation, Immunity and Remodeling in Chronic Rhinosinusitis  
**Robert Schleimer, Ph.D.**

*10:50 a.m.* Immune Tolerance in the Airways Influencing Disease Inception and Therapy  
**Anuradha Ray, PhD**

*11:20 a.m.* Mast cells-structural cell interactions in asthma  
**Professor Christopher Brightling**

*11:50 a.m.* Discussion  
**Led by Chief Discussant Thomas A. E. Platts-Mills, MD, PhD, FRS**

*12:15 p.m. Break*  
Pick up boxed lunch and return to meeting room.

*12:30p.m. Lunch/Lecture*

Pro/Con Debate

Analysis of sputum is necessary for the assessment of airway inflammation

**Pro: Parameswaran Nair, MD, PhD, FRCP, FRCPC**

**Con: Christopher Brightling**

**Moderator: Paul O'Byrne, MB, FRCPI, FRCPC, FRCPE, FRCP (Glasg)**

1:30 p.m. FENOTypes  
**Benjamin M. Gaston IV, MD**

2:00 p.m. *Break (Visit Exhibits)*

### **Gilbert Friday Memorial Lecture**

2:20 p.m. Regulation of inflammatory genes in asthma  
**Professor Peter Barnes**

3:05 p.m. Discussion  
**Led by Chief Discussant Thomas A. E. Platts-Mills, MD, PhD, FRS**

3:30 p.m. *Closing Remarks/Adjournment*

7:00 p.m. *Conference dinner for registrants, faculty and guests.*

**Sunday, November 3, 2013**      **4.0 AMA PRA Category 1 Credits™**

### **Session Chair: Giovanni Piedimonte, MD**

7:00 a.m. *Optional Industry Lecture and Breakfast*

7:30 a.m. *Registration/Continental Breakfast (Visit Exhibits)*

8:00 a.m. Opening Remarks and Introduction  
**Giovanni Piedimonte, MD**

8:10 a.m. Biologic therapy for asthma: Beginning to achieve the goals of personalized medicine  
**Sally E. Wenzel, MD**

8:40 a.m. RSV and Asthma: Speed-Dating or Long-Term Relationship?  
**Giovanni Piedimonte, MD**

9:10 a.m. Discussion  
**Led by Chief Discussant Thomas A. E. Platts-Mills, MD, PhD, FRS**

9:40 a.m. *Break (Visit Exhibits)*

10:00 a.m. Asthma in Schools  
**Deborah Gentile, MD**

10:30 a.m. Sinusitis and Asthma: What are the relationships?  
**Michael A Kaliner, MD**

11:00 a.m. Point-of-care tests to identify and target bronchitis  
**Parameswaran Nair, MD, PhD, FRCP, FRCPC**

11:30 a.m. Discussion  
**Led by Chief Discussant Thomas A. E. Platts-Mills, MD, PhD, FRS**

11:50 a.m. Medical Survivor: Adult Cases  
**Moderator: David Skoner, MD**

12:35 p.m. *Closing Remarks/Adjournment*  
**Philip Fireman, MD, Giovanni Piedimonte, MD**

## Accreditation

### Physicians

Allegheny General Hospital is accredited by the Accreditation Council for Continuing Medical Education to provide continuing medical education for physicians.

Allegheny General Hospital designates this live activity for a maximum of *16.50 AMA PRA Category 1 Credits™*. Physicians should claim only the credit commensurate with the extent of their participation in the activity.

### Nurses

For the purpose of recertification, the American Nurses Credentialing Center accepts *AMA PRA Category 1 Credits™* issued by organizations accredited by the ACCME

### Designation of credits for non-physicians

Allegheny General Hospital certifies participation in this educational activity, which has been designated for a maximum of *16.50 AMA PRA Category 1 Credits™*.

### Credit Breakdown

Friday, November 1	5.75 AMA PRA Category 1 Credits™
Saturday, November 2	6.75 AMA PRA Category 1 Credits™
Sunday, November 3	4.0 AMA PRA Category 1 Credits™

## Location, Directions and Accommodations

### Nemacolin Woodlands Conference Center Farmington, Pennsylvania

For directions to Nemacolin Woodlands, please visit their Web site at [www.nemacolin.com](http://www.nemacolin.com).

A block of rooms has been reserved at Nemacolin Woodlands at the special conference rate of \$139.00 + tax single/double occupancy for lodge room and \$189.00 + tax single/double for chateau room. There is no additional charge for children seventeen (17) years of age and under when sharing the same room as the parents and using existing bedding. A resort fee of \$15.00 per room/per night will also apply. This fee includes valet parking, on-property shuttle service, fitness center access (not inclusive of wet areas) wireless internet, local and toll free calls, pool access, in-room coffee, newspaper, art tours, tennis, hiking, trail access and Marina access.

In addition, Nemacolin Woodlands is pleased to offer the following:

- 15% discount on merchandise purchases in the Nemacolin Retail Shoppes
- 10% discount on all resort activities including golf, spa and shooting, excluding the Wild Side.

Reservations may be made by calling 1 (800) 422-2736 or (724) 329-8555 (ask for reservations). Please be sure to mention you are with the Allegheny General Hospital Asthma Conference to take advantage of the special conference room rate. The room block is limited; therefore, make reservations as soon as possible! The deadline for making reservations at the above rates is September 16, 2013. After this date, reservations will be accepted on space availability and at the prevailing rate.



## Activities

### **Nemacolin Asthma Conference Dinner Saturday Evening, 7:00-10:00 p.m.**

Please join us for an opportunity to meet with fellow registrants, faculty and guests. We promise you a fun-filled evening. Cost per conference registrant is \$40.00 per person; cost per guest is \$40.00 per person. There is also special pricing for children ages 5-11 years of \$15.00 per child. Please RSVP on the registration form. Tickets will be with your registration packet.

## Additional Information

For additional information, contact the Continuing Medical Education office by calling (412) 359-4952 or by e-mail: [rmiglior@wpahs.org](mailto:rmiglior@wpahs.org). Please visit the Nemacolin Asthma Conference Web site at [www.nemacolinasthma.org](http://www.nemacolinasthma.org) for conference updates.

## Refund Policy

A refund of the registration fee, less a \$75 processing fee, will be made when a written request or a telephone request followed by a written confirmation is received prior to October 18, 2013. After this date, refunds will not be made. Fees will not be refunded for failure to attend.

Allegheny General Hospital reserves the right to cancel or postpone any conference because of unforeseen circumstances or insufficient enrollment. In the event of such cancellation, full tuition will be refunded.

## Registration Information

The registration fee includes course materials, lunch and break refreshments.

### **Fee: \$400 Physicians**

\$195 Residents\*, Fellows\*, Nurses and Other Health Care Professionals  
(\* must include verification letter from Chief of Service)

### **Deadline: October 18, 2013**

(After this date, registrations will be taken on a space available basis.)

**To Register:** Telephone registrations are not accepted. To register online or to download a brochure please visit [www.aghcme.org](http://www.aghcme.org); select Course Schedule from the left menu and scroll down to locate the conference. To mail or fax your registration, please complete the registration form and return it with the registration fee to:

Continuing Medical Education  
Allegheny General Hospital  
320 East North Avenue  
Pittsburgh, Pennsylvania 15212-4772  
(412) 359-4952  
(412) 359-8218 Fax

The preferred method of payment is VISA, MasterCard, American Express or Discover; however, checks will be accepted made payable to Allegheny General Hospital CME.

*In accordance with the Accreditation Council for Continuing Medical Education (ACCME) and the policy of Allegheny General Hospital, presenters must disclose all relevant financial relationships, which in the context of their presentation(s), could be perceived as a real or apparent conflict of interest, (e.g., ownership of stock, honoraria or consulting fees). Any identifiable conflicts will be resolved prior to the activity. Any such relationships will be disclosed to the learner prior to the presentation(s).*

## Registration Form

PLEASE INDICATE: \_\_\_\_\_ # Adults attending Saturday Buffet Dinner @ \$40.00  
\_\_\_\_\_ # Children attending Saturday Buffet Dinner @ \$15.00

NAME \_\_\_\_\_  
DEGREE \_\_\_\_\_  
AFFILIATION \_\_\_\_\_  
ADDRESS \_\_\_\_\_  
CITY \_\_\_\_\_ STATE \_\_\_\_\_ ZIP \_\_\_\_\_  
TELEPHONE (     ) \_\_\_\_\_ E-MAIL ADDRESS \_\_\_\_\_

METHOD OF PAYMENT:  Credit Card  
 Check  
CREDIT CARD TYPE:  Visa  
 MasterCard  
 American Express  
 Discover

If you require assistance with hearing, vision or mobility to make this conference accessible to you, please check this box and contact the CME office at **(412) 359-4952** at least two weeks prior to the conference date.

TOTAL AMOUNT \_\_\_\_\_  
CREDIT CARD # \_\_\_\_\_  
EXP. DATE \_\_\_\_\_  
NAME ON CARD \_\_\_\_\_  
SIGNATURE\* \_\_\_\_\_

\* *By signing this form, I authorize Allegheny General Hospital to charge my credit card for the above amount. My signature also indicates that I will not dispute this charge in the future through my credit card company.*

## Activities

### Nemacolin Asthma Conference Dinner Saturday Evening, 7:00-10:00 p.m.

Please join us for an opportunity to meet with fellow registrants, faculty and guests. We promise you a fun-filled evening. Cost per conference registrant is \$40.00 per person; cost per guest is \$40.00 per person. There is also special pricing for children ages 5-11 years of \$15.00 per child. Please RSVP on the registration form. Tickets will be with your registration packet.

## Additional Information

For additional information, contact the Continuing Medical Education office by calling (412) 359-4952 or by e-mail: [rmiglior@wpahs.org](mailto:rmiglior@wpahs.org).

Please visit the Nemacolin Asthma Conference Web site at [www.nemacolinasthma.org](http://www.nemacolinasthma.org) for conference updates.



Continuing Medical Education  
Allegheny General Hospital  
320 East North Avenue  
Pittsburgh, Pennsylvania 15212-4772

---

Non-Profit  
Organization  
U.S. Postage  
**PAID**  
Pittsburgh, PA  
Permit No. 2885

---



NEMACOLIN ASTHMA CONFERENCE

[www.nemacolinasthma.org](http://www.nemacolinasthma.org)